

Tips for using the

# *Zapfino type family*

- ◆ Zapfino type family
- ◆ Upper case characters
- ◆ Ornamental upper case characters
- ◆ Overlaps
- ◆ Swash characters and ornaments

# Zapfino type family

- ▶ Zapfino has 4 alphabets which can be interchanged and mixed together. For example, you could mix the basic alphabet with any of the lower case character variants. Or you could create a particular style by exchanging individual characters in ornamented upper case character sets.

## ▶ Zapfino One

abcdefghijklmnopqrstuvwxyz0123456789ABCDE  
FGHIJKLMNOPQRSTUVWXYZ

## ▶ Zapfino Two

abcdefghijklmnopqrstuvwxyz0123456789ABC  
DEFGHIJKLMNOPQRS  
TUVWXYZ



◆ Zapfino Three

abcdefghijklmnopqrstuvwxyz0123456789ABC  
DEFGHIJKLMNOPQRS  
TUVWXYZ

◆ Zapfino Four

abcdefghijklmnopqrstuvwxyz0123456789ABC  
DEFGHIJKLMNOPQR  
STUVWXYZ ge ee



◆ Zapfino Ligatures

*di dr ez es es ff ff ft fl gg go ge is*  
d a W e E c f x v G g b i

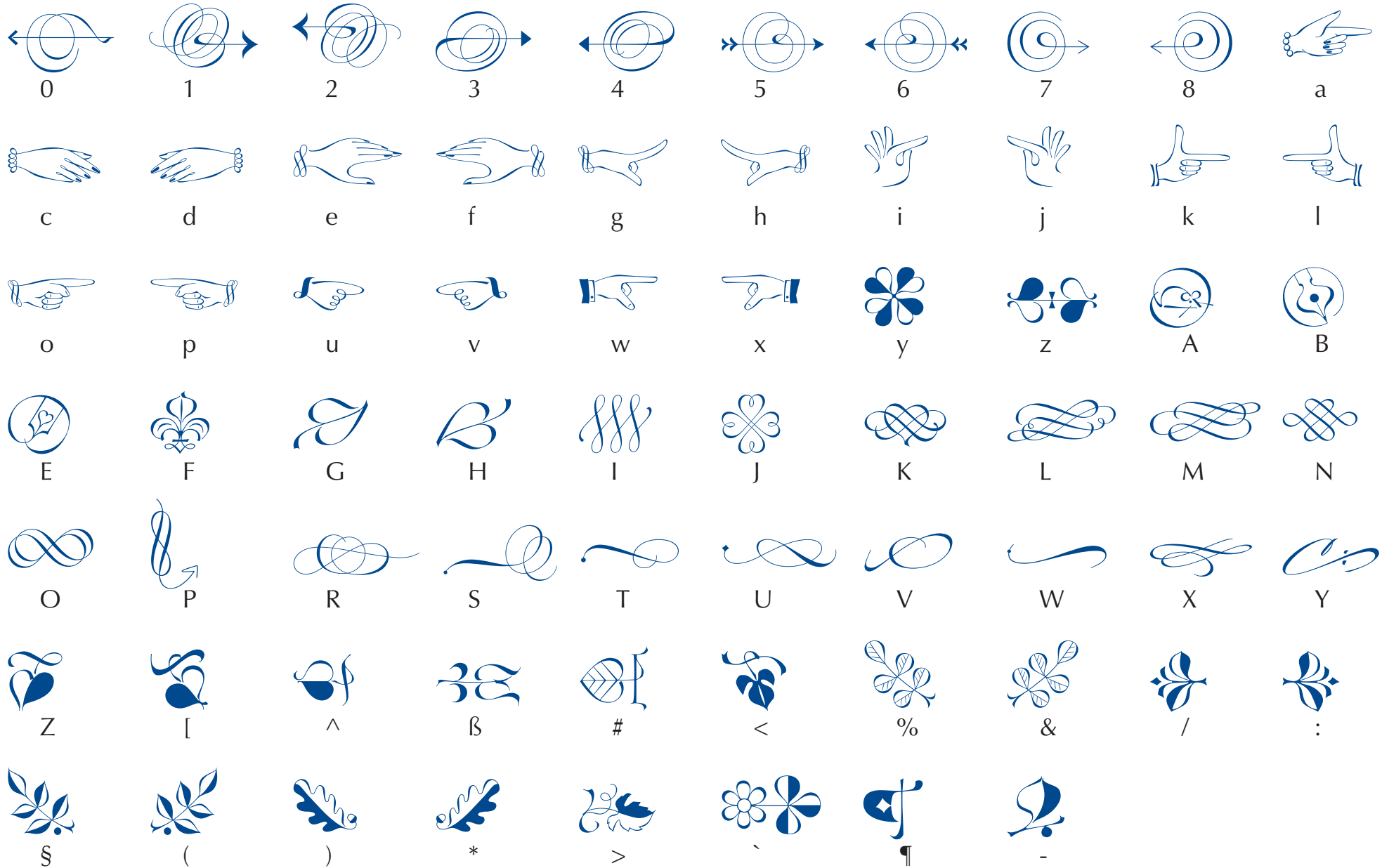
*ll ll ou pp ph ph pf sh ri rt sp ss ss*  
l l o p H h P q R r Q s S

*st th Th tz uz wn the Q Q & E Co Ltd*  
U t T z u w F & 1 2 3 C D

*Ms. Mrs. Mc*  
A B M



◆ Zapfino Ornaments



# Upper case characters

---

- ▶ Please use only the Zapfino One alphabet for words written entirely in upper case characters. Take particular care to achieve a balance with the spaces between the characters – experiment with kerning and character spacing.

*URKUNDE* regular letter spacing

*MENU* minimum spacing

 *DIPLOM*  wide spacing

- ▶ The upper case characters from Zapfino One can also be preceded by swash capitals, for example in titles and for stress

*BAD HOMBURG* *FULDA*

---



# Ornamental upper case characters

---

- ◆ The ornamental upper case characters are not suitable for whole words. However, they give an effective appearance to monograms and combinations of a few letters.



alignment with baseline




nonaligned

---

- ◆ The ornamental upper case letters from Zapfino can be used as initials for a number of types. Here are two examples, one used with Optima Antiqua and the other with Palatino.  
N.B.: The strong slant of Zapfino is not compatible with normal italic types since the latter are always much steeper.



example of an elevated cap



another example, this time with a drop cap that spans three lines used in conjunction with a composition in Linotype Palatino.

---

# Overlaps

- ▶ Make sure your lines are not spaced too closely so that the swash characters do not overlap too often. Select other Zapfino variants for individual characters to avoid any particularly bad overlaps.

check  
p k

e.

In the Zapfino Four font, you can find a final swash e that incorporates the period symbol.  
Another possibility:

e

- ▶ It is sometimes advisable to move a line slightly, even if it lies on the center axis. It is often sufficient to slightly alter the space between the words if overlapping swashes do not look good. Do a test print out to view the effect of your work.

p and  
k would touch

than moved a bit to the right



# Swash characters and ornaments

- ▶ Be sparing in your use of the outsized swash characters. Depending on character shape, they should only be used in the first or last line.

*the letters y, g etc. only once*



- ▶ You should also be sparing with the special endings on the character f. The calligraphic effect of Zapfino is best achieved without too many fancy additions to the text.

simply put side by side the final stroke  
and the cross-stroke of f



- 
- ◆ You can use a few ornaments for page numbers and as decoration. However, there should be a reasonable distance between the ornaments and the page numbers.



- 
- ◆ The ornaments and pen strokes in Zapfino serve to highlight the calligraphic nature of the type.



- 
- ¶ A new paragraph symbol at the start of a text underlines the emphasis given to a particular section.  
An appropriate flourish can be placed at the end of a text. It is advisable, however, to use a larger line spacing for the text in order to ensure sufficient space.

---

We hope you enjoy using Zapfino. Experiment with the variations. You will soon discover the numerous possible applications of this type family and be able to create attractive documents with it.

Linotype Library Team

